

Career and Technical Education's 12 High-Quality Work-Based Learning Experiences

Career and Technical Education (CTE) in Virginia is a series of secondary courses focusing on equipping students with the skills and knowledge required for specific careers. One method of instruction is high-quality work-based learning, which combines academics with hands-on work experiences to prepare all students for competitive, integrated employment. Starting in middle school and continuing through high school, CTE offers work-based learning opportunities to help students explore careers, gain job skills, and increase their chances of employment success. Schools provide students with technical instruction, while local businesses and organizations provide real work experiences, guidance, and feedback to support students' growth.

6th-12th Grade

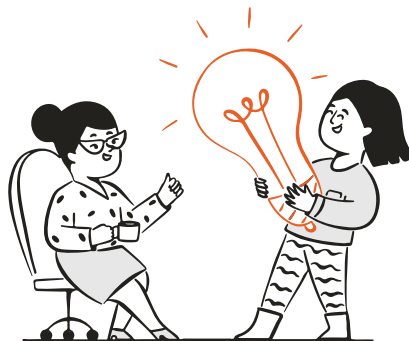
Service Learning

Students help the community while learning new skills.



School-Based Enterprise

Students run their own businesses providing goods or services.



Job Shadowing

Students interact and observe employers on worksites.

Mentorship

Students are matched with a successful professional for advice and guidance.

Externship

Students are paired with career professionals to learn about a specific job.



Supervised Agricultural Experience

Students gain industry knowledge and management skills required for the agricultural curriculum.

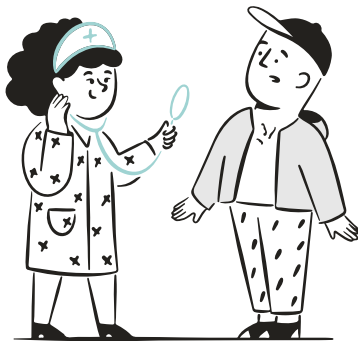
Internship

Students interact and observe employers on worksites.



Youth Registered Apprenticeship

Students receive technical instruction and hands-on training from a registered employer.



Entrepreneurship

Students plan, operate, and assume financial responsibility for a business.



Clinical Experience

Students are in healthcare settings to observe and apply classroom instruction.

Cooperative Education

Students participate in a program that combines curriculum and occupational instruction in a specific career.

Registered Apprenticeship

Students develop technical skills while on the job with a registered employer.